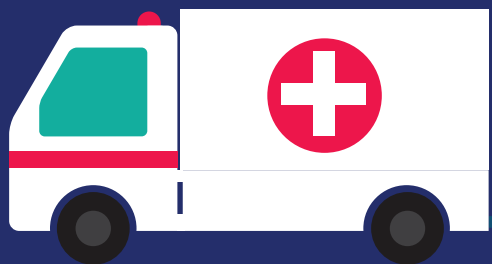


Ambulance attendances involving people with a personality disorder (PD)– investigation of crisis-driven re-attendances for mental health, alcohol and other drugs, and suicide-related events



Over a **6.5 year** period, there were

**76,929**

ambulance attendances for **9,632 people** with borderline and/or other personality disorder (4.1% of the total).



**8.3%**

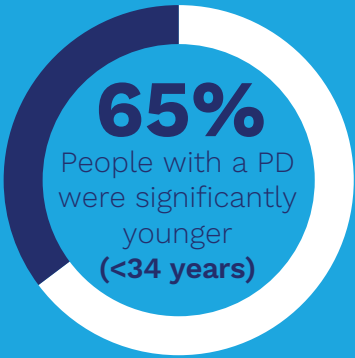
of this group accounted for half of ambulance callouts, requiring ambulance services on **38,167 occasions**

**Suicidal and self-harm presentations**

among service users with personality disorder were substantially greater than among people with other mental disorders



**Compared to people with other mental health disorders**



**41.3%**

Significantly more attendances for people with a PD involved police co-attendance



**56.2%**

Ambulance attendances for patients with personality disorders demonstrated suicidal and self-harm behaviours



**20.9%**

Ambulance attendances for patients with personality disorders who attempted suicide